

Guidebook for Foreigners



Kagawa Prefectural Police

Introduction

This Handbook describes the basic matters that you need to pay special attention to avoid criminal incidents, accidents, etc. while living in Japan. We hope this will help make your life here more comfortable.

The police are working 24 hours a day to secure your safety and create a more comfortable town to live in.

If you have any trouble due to a criminal incident, accident, etc., please contact us or consult with a police officer at the nearest police station, police box, etc.

● Table of Contents ●

● Calling the emergency number 110 1	● Follow the five rules of bicycle safety. 5
● 6 Key points for calling 2	● Signs for Pedestrians and Cyclists 6
● To avoid becoming a crime victim 3	● Disaster countermeasures 7
● To prevent traffic accidents 4	● Location of police stations and telephone numbers 8

Calling the emergency number 110

In the case of an emergency, crime, or accident, please call the emergency number 110 according to the following procedures.

From a telephone that is subscribed at home or in your workplace	Please push or dial the numbers 110.
From a mobile phone	Please push the numbers 110. (No area code required.)
From a pay phone with a red button (Emergency Call Button)	Take the receiver and push the "red button" on the front. Then, push the numbers 110. (Toll free) (Emergency Call Button)
From a pay phone without a red button	Take the receiver and push the numbers 110. (Toll free)

A simultaneous command is sent to a nearby police station when the call is received so police cars and police officers will be dispatched even while the call is ongoing.

When calling the emergency number 110 from a mobile phone

- Talking on the phone while driving is dangerous. Be sure to stop your car before calling the emergency number.
- On a general road, please convey the surrounding significant objects (a gas station, a convenience store, etc.)
- On an expressway, please convey the name of the expressway, whether you are on the up-lane or the down-lane, and the "kilometer spot" indicated on the left side of the road.
- If you call the emergency number near the prefectural border, the call may be connected to the emergency number 110 of the adjoining prefecture. Please confirm your current location prior to calling the emergency number.

6 Key points for calling

1 What happened?

- Please describe what happened.
DOROBOU: theft
KOUTSŪJIKO: traffic accident
KENKA: fight etc.



2 Where did it happen?

- Please convey the address and a building that can serve as a target for finding.



3 When did it happen?

- For example, 2 minutes ago



4 Describe the suspect (features, clothes, direction of escape)

- Height is XX. He/she has a XX build.
He/she looks like XX (name of a famous individual).
- Black short coat and blue trousers
He/she had a black bag.
- He/she ran towards the station.
He/she drove away in a black car (car number: XXX).
He/she rode a white bicycle, etc.



5 What is the current situation?

- The room has been ransacked.
- A suspicious person is inside the house.
- Someone is fighting in front of me, etc.



6 Your address, name and contact number

- If you don't know the address, you can convey, for example: Room number XX of the XX apartment near XX University
- Foreign student of XX school, trainee of XX Company



To avoid becoming a crime victim

Be careful of bicycle theft.

- When you park and leave your bicycle, please be sure to lock it (with a double lock, if possible).
- When buying a bicycle, please register it for theft prevention at the shop. Also, when obtaining a second-hand bicycle from a friend, etc., please carry out the necessary procedures for transferring the registered ownership for bicycle theft prevention at the nearest police station (Community Safety Division).



Be careful of purse-snatching.

- When going out, carry your bag under your arm or carry it diagonally under your shoulder. Also, please put a security net on the front basket of your bicycle to avoid becoming a "purse-snatching" victim.



Be careful of molesters. (For women)

- It is advisable for women to avoid dark streets as much as possible in order to avoid being molested.
- Please carry a security buzzer or other portable alarm device.



For comfortable living

- Once you step out of your room, you are in a public place. You need to not only observe Japanese laws, but also mind basic manners.
- Even when in your room or in a car, please refrain from shouting or making loud sounds, and pay attention to avoid making a nuisance for people around you.
- Alcohol consumption and smoking are prohibited for persons under the age of 20 according to Japanese Law.



- If you have lost personal belongings, please report it immediately to the nearest police box or police station.
- If you find lost personal belongings, please report it in the same way.

*Taking lost personal belongings or parked bicycles is a crime. Although they may look abandoned, they may belong to someone. Do not take them home without permission.

To prevent traffic accidents

What you need to be careful of when using roads

Many people and vehicles use the roads. It is an obligation for a member of society to follow traffic rules for securing safe and smooth traffic, and to practice good traffic manners.



You need to be careful of the movements of surrounding pedestrians and vehicles, and act with consideration for others.



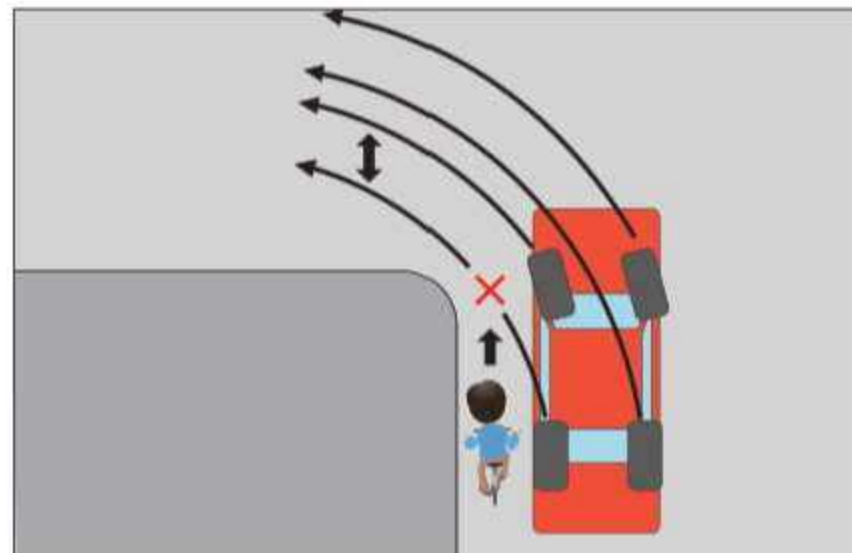
Think not just of your own convenience, and avoid making noise or other nuisances for people living along the road.



In order to avoid obstacles or nuisances for traffic, do not litter on a road or leave something without permission.



Follow the instructions of police officers, etc.



Become familiar with the blind spots, inner wheel differences, and other automobile characteristics.



If you find someone in trouble in a traffic accident or vehicle failure, please cooperate with each other by calling emergency services or providing relief, etc.



In case of an accident

Please make sufficient preparations in your free time.

- Subscribe to an automobile insurance policy that covers you against personal injury liability for accidents involving bicycles
- Acquire the necessary first aid knowledge to carry out relief for an injured person at a traffic accident site

What to do in a traffic accident

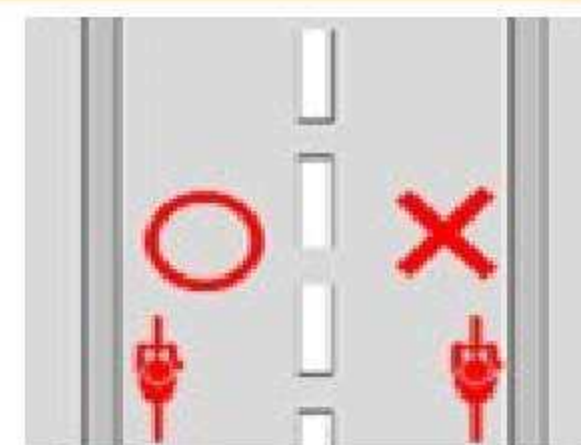
- 1 Immediately stop driving your vehicle.
- 2 Move your vehicle to a road side or other places to avoid interference with traffic.
- 3 If someone is injured, dial 119 to call an ambulance.
Until an ambulance arrives, perform first aid by stopping the blood with a clean handkerchief and talking to the injured person(s). Note that you should not move the injured person(s) more than is necessary without reasons.
- 4 Regardless of injured persons, you should dial 110 to call the police and report the accident.
You must not leave the accident site until a police officer arrives. (When a vehicle driver is involved in a traffic accident, the driver is required to report the accident situation to a police officer.)



Follow the five rules of bicycle safety.

- 1 As a general rule, ride your bicycle on the left side of the road.**
Exceptions are made on sidewalks, where you must give priority to pedestrians.

As a general rule, on roads where there is a distinction between the sidewalk and the roadway, you must use the roadway.
In addition, you must ride your bicycle on the left side of the road.



In the exceptional case of riding on the sidewalk, you must stop temporarily if you are obstructing pedestrians from passing.



- 2 Obey traffic lights and stop at intersections to ensure safety.**



When riding a bicycle on the road, you must obey traffic lights, etc.



Always stop at places with stop signs and check in both directions to make sure it is safe to proceed.

- 3 Turn on the light at night.**

Riding your bicycle without lights is extremely dangerous as it makes it difficult for others to see you. Be sure to turn on the light at night.



- 4 Riding while intoxicated is prohibited.**



Riding a bicycle under the influence of alcohol is prohibited, just as with driving a car.

- 5 Wear a helmet.**

To reduce the risk of injury from traffic accidents, you must make every effort to wear a helmet when riding a bicycle.



Signs for Pedestrians and Cyclists



Signs for Pedestrians and Cyclists



Road closed to pedestrians, vehicles, and bicycles

歩行者、車、自転車の通行禁止。



Reserved for pedestrians only

歩行者だけが通行できます。



Road closed to vehicles and bicycles

車や自転車の通行禁止。



Reserved for pedestrians and cyclists only

自転車と歩行者だけが通行できます。



No entry for vehicles and bicycles

車や自転車はここから入ってはいけません。



Reserved for cyclists only

自転車だけが通行できます。



Bicycles are prohibited

自転車の通行禁止。



Pedestrian crossing

横断歩道です。



Vehicles and bicycles must slow down to enable a sudden stop

車や自転車はすぐに止まれる速さで通行すること。



Bicycles may cross within the designated lines

自転車横断帯です。



Vehicles and bicycles must come to a full stop. Look both ways before proceeding

車や自転車は、一時停止して、右・左の安全を確認すること。



Caution required for children from local schools, kindergartens, child-care centers, etc.

学校、幼稚園、保育所等があります。



Crossing by pedestrians is prohibited

歩行者の横断禁止。



Traffic lights ahead

信号機があります。

Disaster countermeasures

Japan is a country where natural disasters such as earthquakes and typhoons often hit, and Kagawa Prefecture is not an exception. We don't know when disasters will strike and it is necessary to minimize the damage by taking account of the following points.

Earthquake

In the event of a major earthquake:

- Get under a table or desk.
- Turn off sources of fire after the earthquake stops.
- Open the door and secure an evacuation route.
- Do not immediately go outside. Look around the surroundings carefully.
- Put your shoes on and evacuate to a shelter or other safe place to protect yourself from danger.

If you are near the sea, tsunami tidal waves may arrive. Immediately evacuate to high ground, such as a tsunami evacuation building.



Typhoon

When a typhoon has hit your area, refrain from going outside and check the news on the TV or radio. If a "Hinan Kankoku (evacuation advisory)" has been issued, you need to evacuate to the evacuation place designated by the city or town or to other safe places.



Points to check immediately

Please immediately check points such as the following to be prepared for an emergency:

- Location of the designated evacuation place
- What to take with you when evacuating (food, drinking water, clothes, cash, etc.)

In the event of a major disaster, you can contact your family or friends by accessing the emergency messaging service from your phone, mobile phone, or PC. Please check how to use it in advance.



Location of police stations and telephone numbers

Headquarters	Postal code	Address	Telephone number
Kagawa Prefectural Police Headquarters	760-8579	Bancho 4-1-10, Takamatsu City	(087) 833-0110

Police station	Postal code	Address	Telephone number
Higashikagawa Police Station	769-2601	1723-2, Sanbonmatsu, Higashikagawa City	(0879) 25-0110
Sanuki Police Station	769-2101	1028-1, Shido Sanuki City	(087) 894-0110
Takamatsu Higashi Police Station	761-0702	56-4, Oaza Hiragi, Miki-cho, Kita-gun	(087) 898-0110
Shozu Police Station	761-4421	1351-1, Ko Nouma, Shodoshima-cho, Shouzu-gun	(0879) 82-0110
Takamatsu Kita Police Station	760-8511	2-30, Nishiuchi-machi, Takamatsu City	(087) 811-0110
Takamatsu Minami Police Station	761-8511	1251-8, Tahikami-machi, Takamatsu City	(087) 868-0110
Sakaide Police Station	762-0011	1204-1, Ejiri-cho, Sakaide City	(0877) 46-0110
Takamatsu Nishi Police Station	761-2305	1332-1, Takinomiya, Ayagawa-cho, Ayauta-gun	(087) 876-0110
Marugame Police Station	763-0055	1-7, Shinden-cho, Marugame City	(0877) 22-0110
Kotohira Police Station	766-0003	620-1, Gojo, Kotohira-cho, Nakatado-gun	(0877) 75-0110
Mitoyo Police Station	767-0011	2335-1, Shimokatsuma, Takase-cho, Mitoyo City	(0875) 72-0110
Kan-onji Police Station	768-0066	2-1-55, Showa-cho, Kan-onji City	(0875) 25-0110

Contact Information (for general consultations)

Consultation Desk	Inquiry Contact
Public Consultation / Crime Victim Support Division or general front desk of each police station	Police Headquarters: (087) 833-0110 Or each police station



We protect the safety of prefectural citizens and the peace in the region.

Kagawa Prefectural Police

Kagawa Prefectural Police